



Performance Dashboard  
up to and including August 2022



The data from this report is collected from the following sources:

## Crime Data:

<https://data.london.gov.uk/download/mps-monthly-crime-dahboard-data/ceed0426-1852-480d-9d37-6daf2d72431b/Monthly%20Crime%20New%20Cats%20SNT%20Level%20Offs%20Type.csv>

## Special Crime Data:

<https://data.london.gov.uk/download/mps-hate-crime-or-special-crime-dashboard-data/e29f08cf-358d-49d5-a607-ea035567540f/Monthly%20Crime%20Other%20Crime%20SNT%20Level%20Offs%20Type.csv>

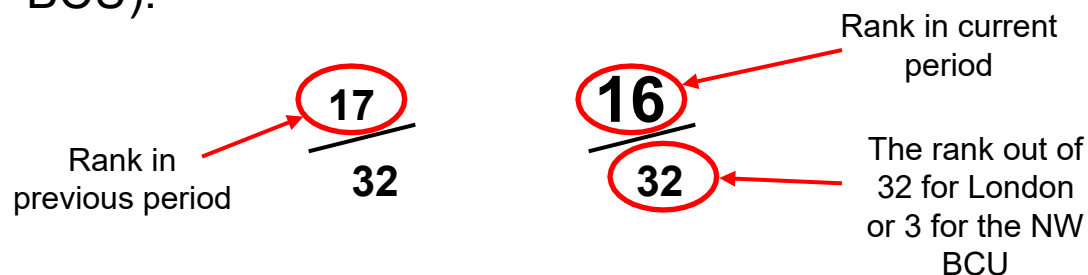
## ASB Data:

<https://www.london.gov.uk/what-we-do/mayors-office-policing-and-crime-mopac/data-and-statistics/crime-dashboard>

Repeat ASB Data is gathered from the Metropolitan Police on request.

# Notes Before We Start

- The lower the ranking the better Barnet is doing when compared with other boroughs across London or in the North West Borough Command Unit (NW BCU).



- Knife crime has previously been reported on as under 25s and non-DV only, this report will note all knife crime with injury which will give a higher number than previous.
- In the London comparison 1/32 is the best, 32/32 is the worst. Change is indicated by the Red Amber Green circle.
- In the NW BCS comparison 1/3 is the best, 3/3 is the worst. Change is indicated by the Red Amber Green arrow.

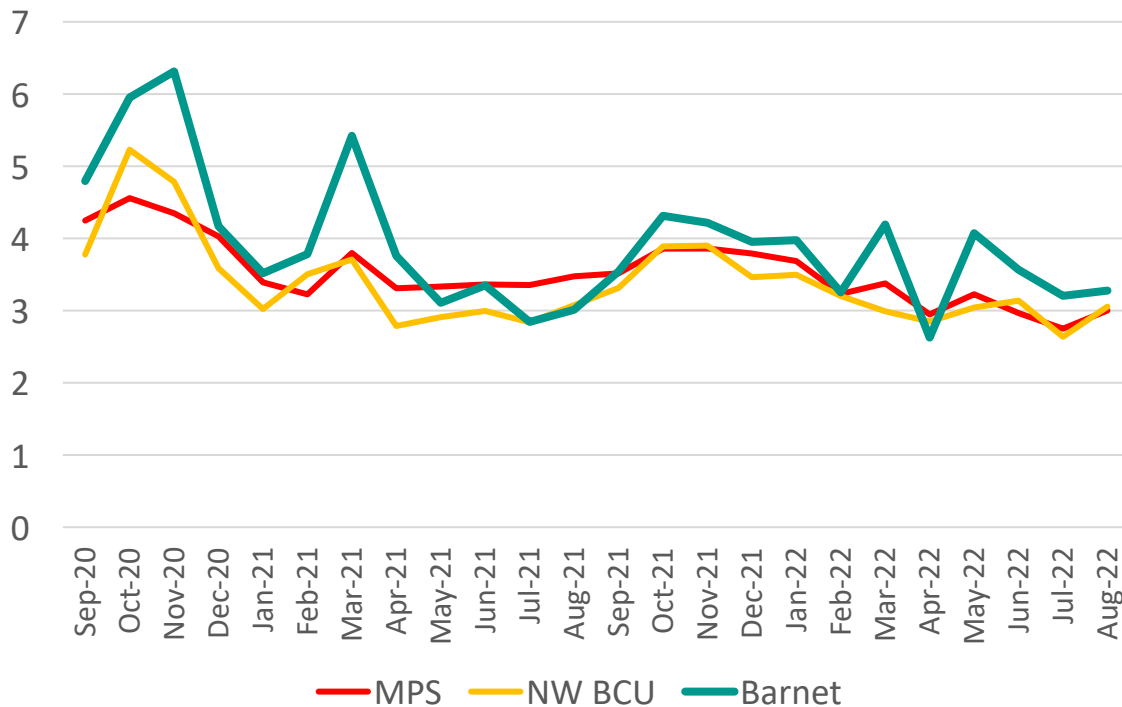
# Burglary - Residential



*In the 3 months of June 2022 to August 2022 there were 417 cases of Residential Burglary in Barnet*

## Trend

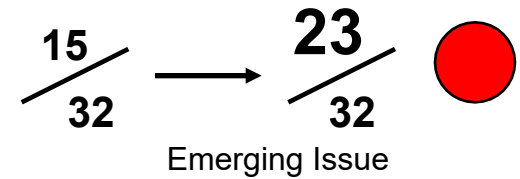
Residential Burglary per 10,000 Population



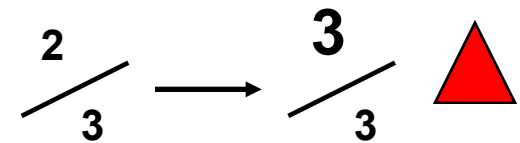
There were 1834 cases of Residential Burglary in Barnet in the 12 months up to August 2022. In the 12 months prior there were 2076. This is a decrease of 11.7%

## 3 Month Performance

MPS Comparison (3 Month Period) change from same period last year.



NW BCU Comparison (3 Month Period) change from same period last year.



There were 417 cases of Residential Burglary in the 3 months of June 2022 to August 2022. In the same period 12 months prior there were 382. This is an increase of 9.2%

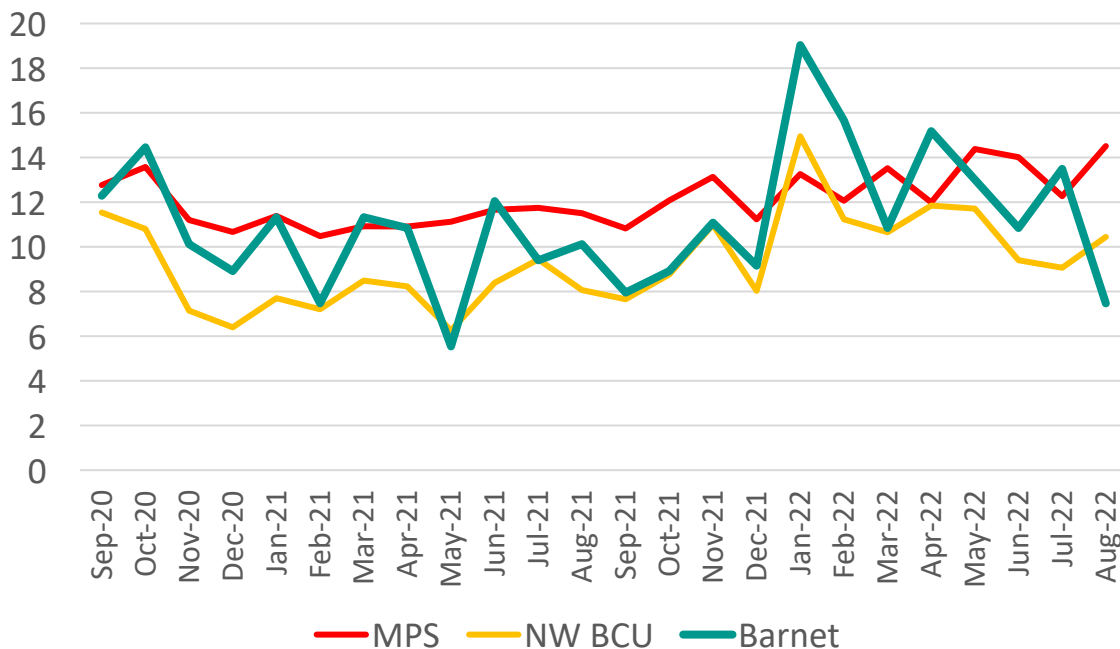
# Burglary - Business and Community



*In the 3 months of June 2022 to August 2022 there were 132 cases of Non-Residential Burglary in Barnet*

## Trend

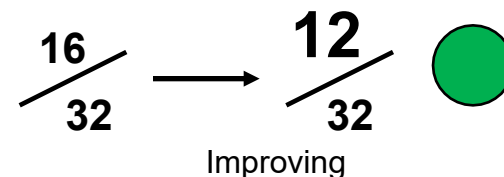
Non-Residential Burglary per 100,000 Population



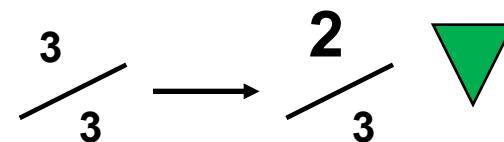
There were 592 cases of Non-Residential Burglary in Barnet in the 12 months up to August 2022. In the 12 months prior there were 514. This is an increase of 15.2%

## 3 Month Performance

MPS Comparison (3 Month Period) change from same period last year.



NW BCU Comparison (3 Month Period) change from same period last year.



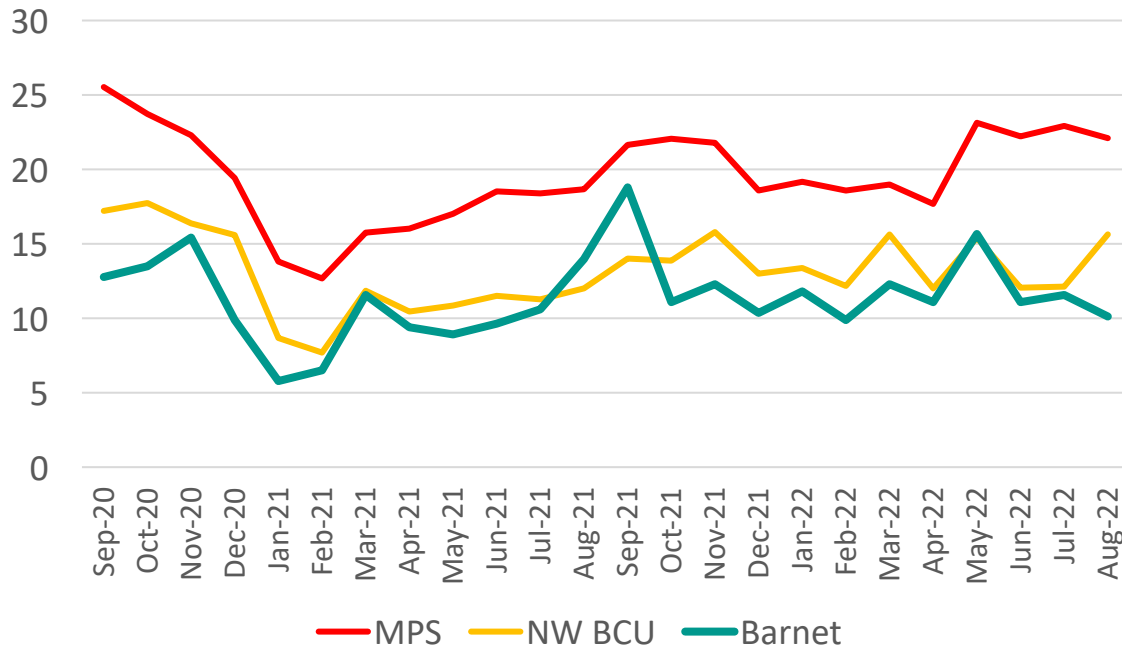
There were 132 cases of Non-Residential Burglary in the 3 months of June 2022 to August 2022. In the same period 12 months prior there were 131. This is an increase of 0.8%

# Robbery of Personal Property

*In the 3 months of June 2022 to August 2022 there were 136 cases of Robbery of Personal Property in Barnet*

## Trend

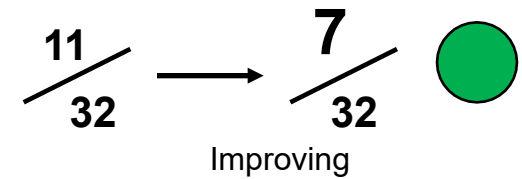
Robbery of Personal Property per 100,000 Population



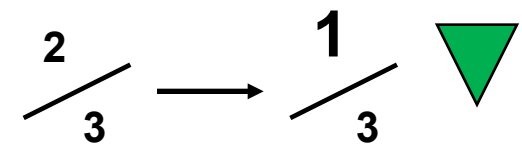
There were 606 cases of Robbery of Personal Property in Barnet in the 12 months up to August 2022. In the 12 months prior there were 531. This is an increase of 14.1%

## 3 Month Performance

MPS Comparison (3 Month Period) change from same period last year.



NW BCU Comparison (3 Month Period) change from same period last year.



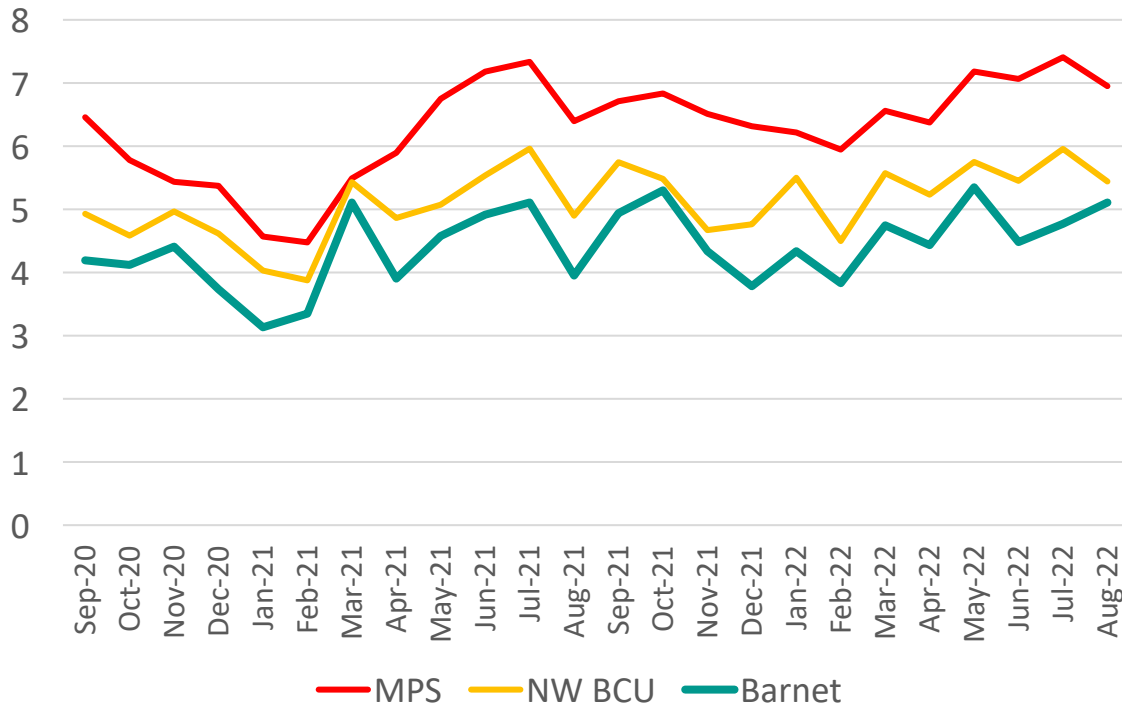
There were 136 cases of Robbery of Personal Property in the 3 months of June 2022 to August 2022. In the same period 12 months prior there were 142. This is a decrease of 4.2%

# Violence with Injury

*In the 3 months of June 2022 to August 2022 there were 596 cases of Violence with Injury in Barnet*

## Trend

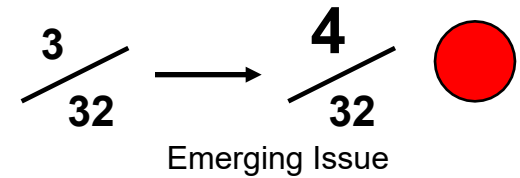
Violence with Injury per 10,000 Population



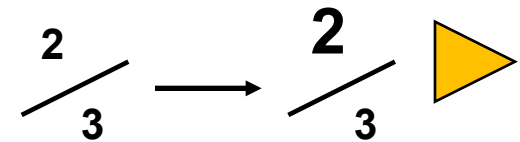
There were 2300 cases of Violence with Injury in Barnet in the 12 months up to August 2022. In the 12 months prior there were 2096. This is an increase of 9.7%

## 3 Month Performance

MPS Comparison (3 Month Period) change from same period last year.



NW BCU Comparison (3 Month Period) change from same period last year.



There were 596 cases of Violence with Injury in the 3 months of June 2022 to August 2022. In the same period 12 months prior there were 580. This is an increase of 2.8%

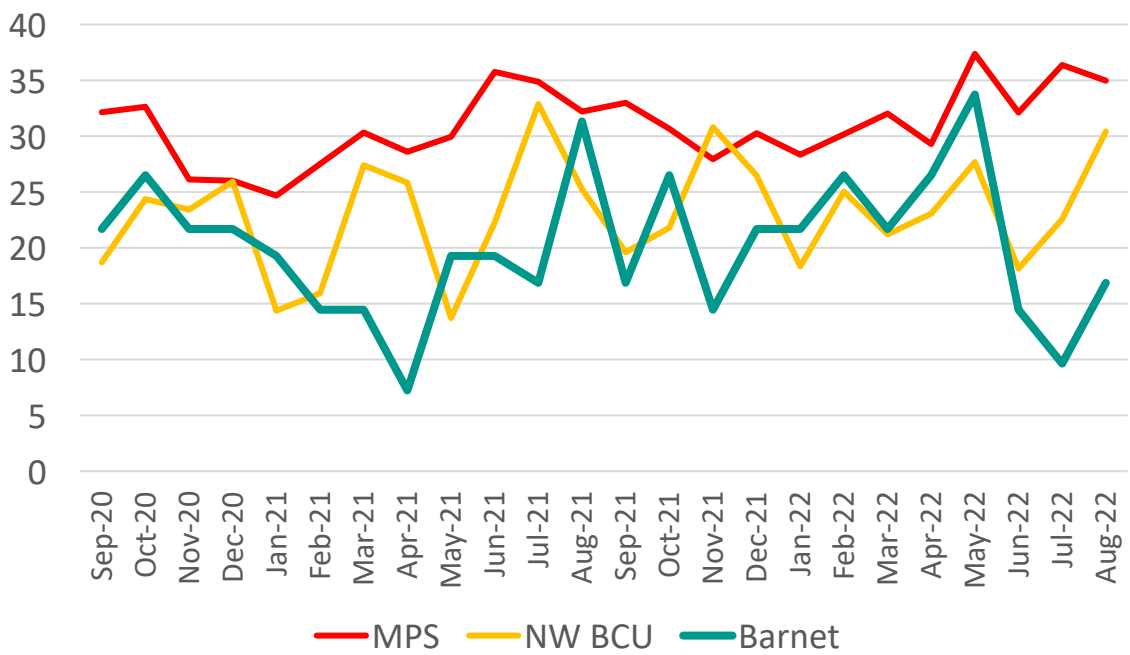
# Knife Crime With Injury



*In the 3 months of June 2022 to August 2022 there were 16 cases of Knife Crime With Injury in Barnet*

## Trend

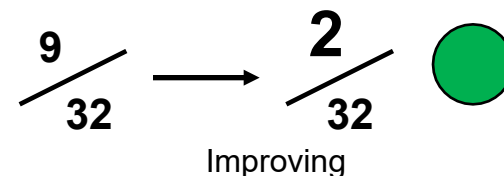
Knife Crime With Injury per 1,000,000 Population



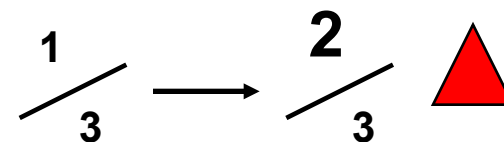
There were 82 cases of Knife Crime With Injury in Barnet in the 12 months up to August 2022. In the 12 months prior there were 85. This is a decrease of 3.5%

## 3 Month Performance

MPS Comparison (3 Month Period) change from same period last year.



NW BCU Comparison (3 Month Period) change from same period last year.



There were 16 cases of Knife Crime With Injury in the 3 months of June 2022 to August 2022. In the same period 12 months prior there were 25. This is a decrease of 36%



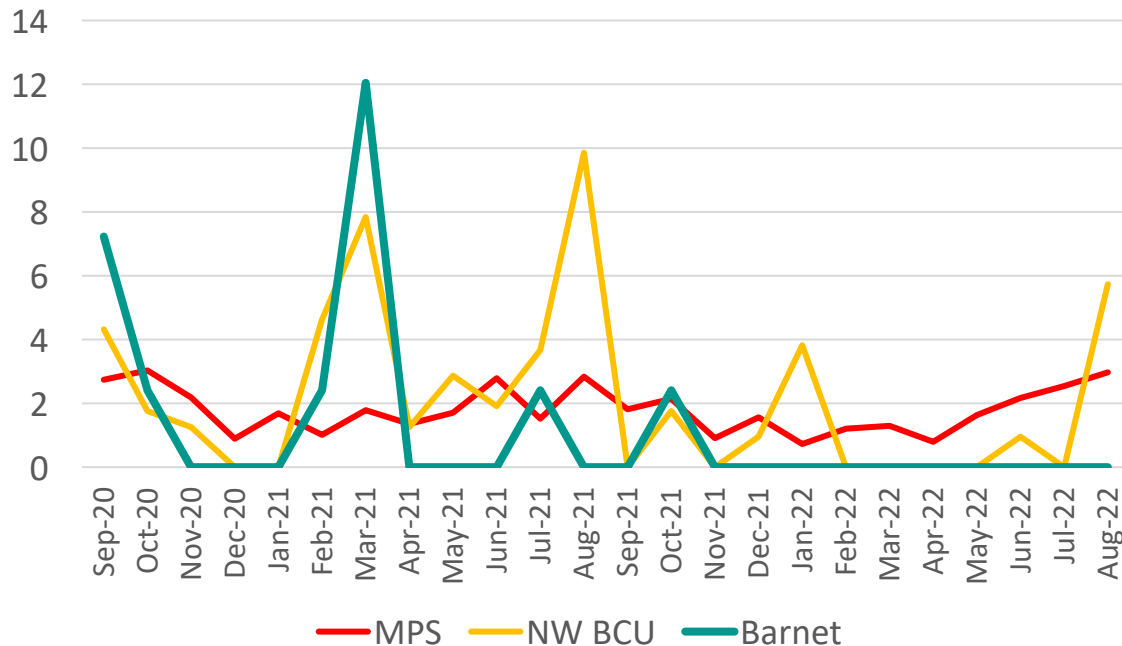
# Gun Crime Lethal Barrelled Discharged



*In the 3 months of June 2022 to August 2022 there were 0 cases of Gun Crime Lethal Barrelled Discharged in Barnet*

## Trend

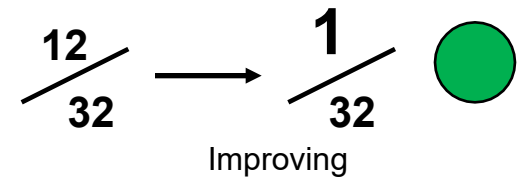
Gun Crime Lethal Barrelled Discharged per 1,000,000 Population



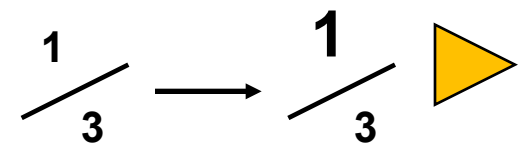
There were 1 cases of Gun Crime Lethal Barrelled Discharged in Barnet in the 12 months up to August 2022. In the 12 months prior there were 11. This is a decrease of 90.9%

## 3 Month Performance

MPS Comparison (3 Month Period) change from same period last year.



NW BCU Comparison (3 Month Period) change from same period last year.



There were 0 cases of Gun Crime Lethal Barrelled Discharged in the 3 months of June 2022 to August 2022. In the same period 12 months prior there were 1. This is a decrease of 100%

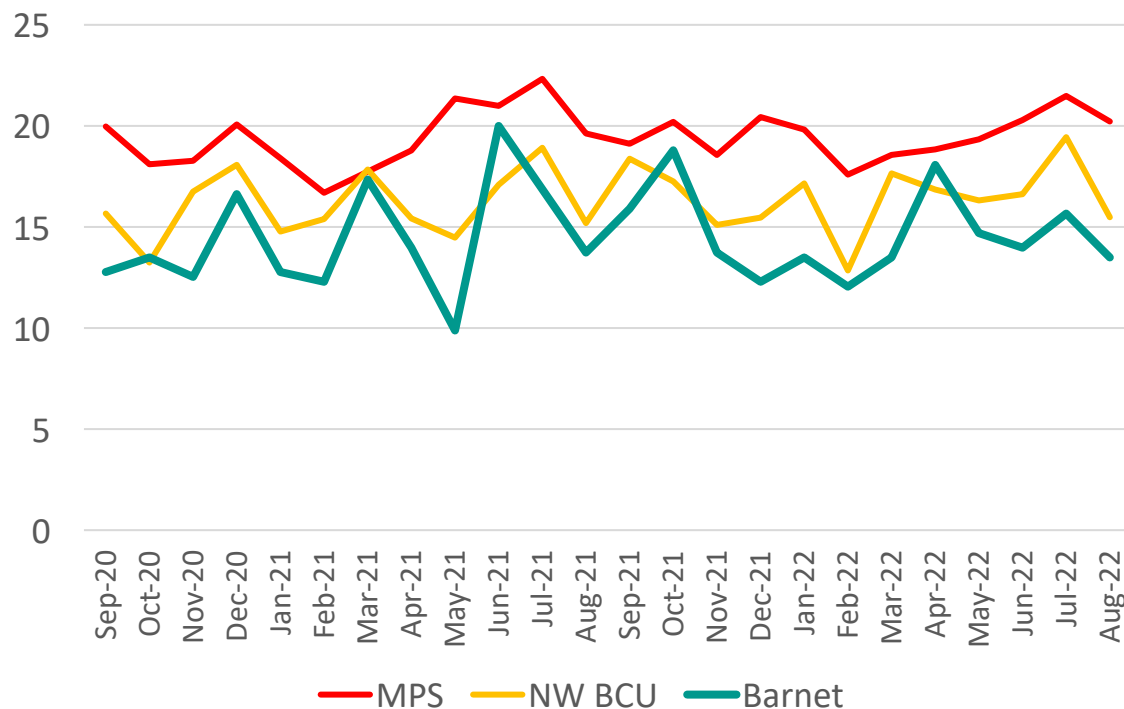
# Domestic Abuse VWI



In the 3 months of June 2022 to August 2022 there were 179 cases of Domestic Abuse VWI in Barnet

## Trend

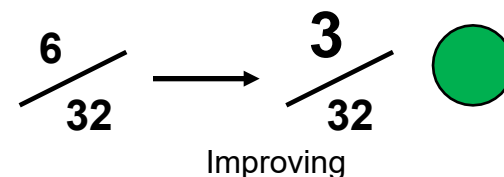
Domestic Abuse VWI per 100,000 Population



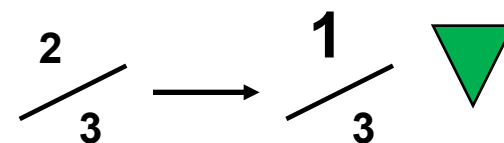
There were 729 cases of Domestic Abuse VWI in Barnet in the 12 months up to August 2022. In the 12 months prior there were 715. This is an increase of 2%

## 3 Month Performance

MPS Comparison (3 Month Period) change from same period last year.



NW BCU Comparison (3 Month Period) change from same period last year.



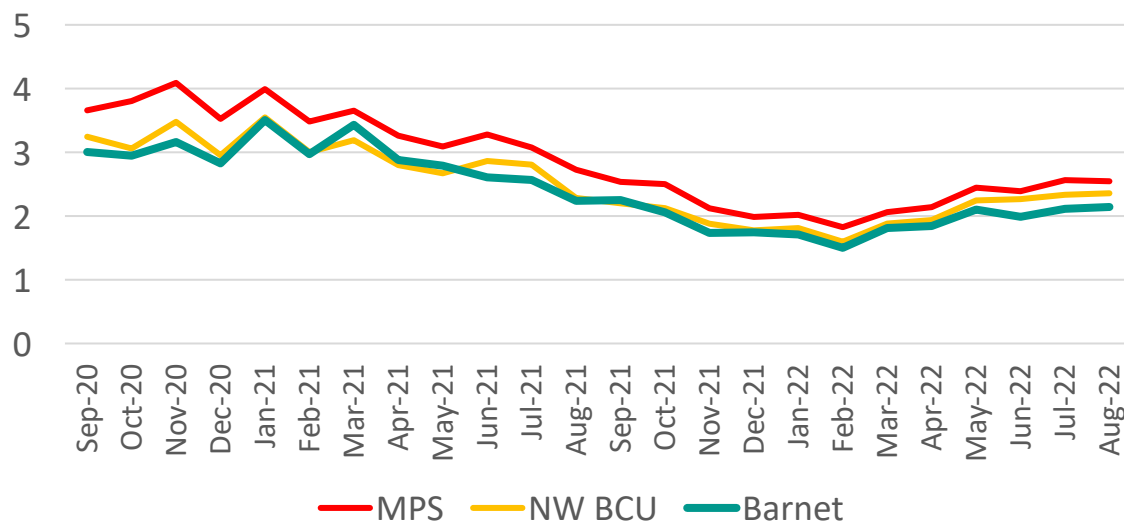
There were 179 cases of Domestic Abuse VWI in the 3 months of June 2022 to August 2022. In the same period 12 months prior there were 210. This is a decrease of 14.8%

# Anti-Social Behaviour Calls

In the 3 months of June 2022 to August 2022 there were 2,591 calls regarding ASB in Barnet

## Trend

ASB per 1,000 Population

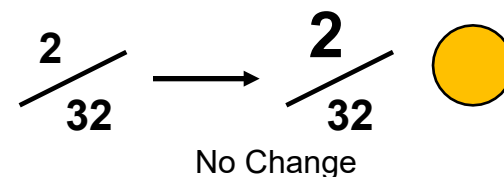


There were 9,545 calls regarding ASB to the Police in Barnet in the 12 months up to August 2022. In the 12 months prior there were 14,496. This is a decrease of 34.2%

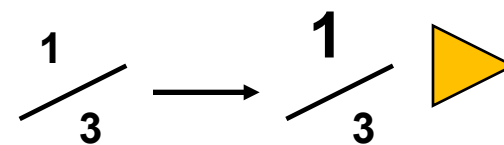
There were 642 repeat (more than once) ASB callers to the Police in Barnet during 31.08.2021 to 30.08.2022. In the 12 months prior there were 1001. This is a decrease of 36%.\*

## 3 Month Performance

MPS Comparison (3 Month Period) change from same period last year.



NW BCU Comparison (3 Month Period) change from same period last year.



There were 2,591 calls regarding ASB to the Police in the 3 months of June 2022 to August 2022. In the same period 12 months prior there were 3,076. This is a decrease of 15.8%